

DIAPHRAGM SEAL

DIRECT COUPLED TYPE

BBQ

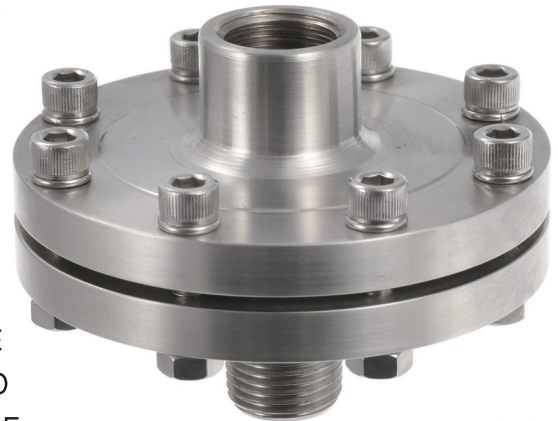


SPECIAL FEATURES

- DIAPHRAGM DIRECTLY WELDED TO TOP CHAMBER
- TWO PIECE CONSTRUCTION
- IDEAL FOR GENERAL PURPOSE APPLICATION
- ROBUST DESIGN
- ALL SS CONSTRUCTION

APPLICATIONS

DIAPHRAGM SEALS ARE PROVIDED IN THE INSTRUMENTS LIKE PRESSURE GAUGES, SWITCHES, TRANSMITTERS IN ORDER TO ISOLATE THE SENSING ELEMENT FROM THE MAIN SERVICE DUE TO ITS CORROSIVE, VISCOUS AND SEDIMENTED NATURE AND TO AVOID CLOGGING AND SOLIDIFICATION.

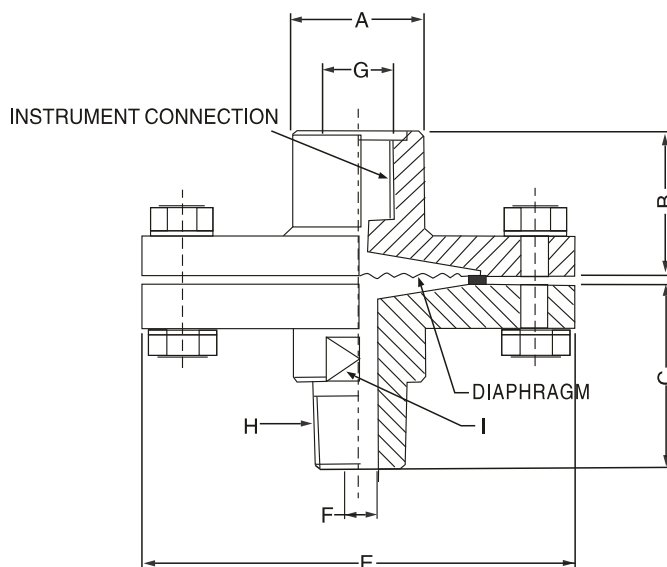


SPECIFICATIONS

STANDARD VERSION

Range	: -1kg/cm ² to 70kg/cm ²
Process Temperature	: -40°C to 200°C or as per fill fluid
Instrument Connection	: 3/8" BSP (F)
Process Connection	: 1/2"NPT (M)
Fill Fluid	: Silicon Oil – DC 200

Diaphragm	: AISI 316L SS
Top Chamber	: AISI 316 SS (Forged)
Bottom Chamber	: AISI 316 SS (Forged)
Nuts/Bolts	: AISI 304 SS
Gasket	: PTFE (upto 200°C)/Metal seal (upto 350°C)



A	~B	~C	E	F	G	H	I
30	40	47	90	Φ8	BSP(F)	*	A/F 25

*As Per customer Requirement.

Notes: • Drawings are not to scale. • All Dimensions are in mm.

HOW TO ORDER

BASIC MODEL

BBQ

OPTIONS

FOR NON STANDARD PRODUCTS/OPTIONAL ITEMS, PLEASE CONTACT FACTORY FOR DELIVERY AND MINIMUM QUANTITY OF ORDER.

TOP CHAMBER

AISI 316L SS

YA

DIAPHRAGM

M1 AISI 316L'SS	M2 NICKEL	M3 TITANIUM
M4 HASTELLOY'C'	M5 SILVER	M8 SUS 316 + TEFLON
M6 MONEL	M7 TANTALUM	

M3

GASKETS

N1 PTFE SEAL GASKET 205°C **N2** METAL SEAL

N1

PROCESS CONNECTION

O1 3/8"BSP(F)	O2 1/2"NPT(F)	O3 1/4"BSP(M)
O4 1/2"BSP(F)	O5 1/4"NPT(F)	O6 3/8"NPT(M)
O7 1/4BSP(F)	O8 3/8"BSP(M)	O9 1/4"NPT(M)
O10 3/8NPT(F)	O11 1/2"BSP(M)	O12 1/2"NPT(M)

O1

Note: Connections like PT/PF/Flaired/UNF/G/R etc.canbe provided on request.

The material of adaptor is same as per bottom chamber material.

INSTRUMENT CONNECTION

Q1 G 1/2" (F)	Q2 1/4"BSP(F)	Q3 1/4"NPT(F)
Q4 1/2"NPT(F)	Q5 3/8"NPT(F)	Q6 3/8" BXP(F)

Q1

BOTTOM CHAMBER

D1 AISI 316 SS

D7

NUTS & BOLTS FOR SEALED CHAMBER CLAMPING

R1 AISI 316 SS

R1

FLUSHING RING

S1 FLUSHING RING WITH 1/2"NPT PLUG(AISI 304 SS)	S2 FLUSHING RING WITH 1/4"NPT PLUG(AISI 304 SS)
S3 FLUSHING RING WITH 1/2"NPT PLUG(AISI 316 SS)	S4 FLUSHING RING WITH 1/4"NPT PLUG(AISI 316 SSA)

S1

FILLING FLUIDS

T1 FLUROLUBE 4.2[-45 TO 175°C/-49 TO374 ° F]	T2 SILICON DC 704 [0 TO 205°C/-32 TO401 ° F]
T3 FLUROLUBE 6.3[-40 TO 235°C/-40 TO455 ° F]	T4 SILICON DC 710 [5TO 345°C/-41 TO653 ° F]
T5 FLUROLUBE FS5[-40 TO 150°C/-40 TO302 ° F]	T6 SYL THERM 800 [-45 TO205°C/-49 TO401 ° F]
T7 FOOD GRADE OIL[-20 TO 140°C/-4 TO284 ° F]	T8 SYL THERM XLT [-75 TO150°C/-102TO302 ° F]
T9 SILICON DC200-10CS[-40 TO 205°C/-40 TO401 ° F]	T10 HALOCARBON OIL

T1

PROTECTION ON WETTED PARTS

V1 PTFE LINING ON BOTTOM CHAMBER-2mm THICK	V2 PTFE PROTECTION FOR DIAPHRAGM
	V3 PTFE COATING ON DIAPHRAGM

V1

TYPE

G1 WITHOUT CAPILLARY **G2** WITH CAPILLARY

G1

CAPILLARY

H1 AISI 304 SS **H2** AISI 316 SS

H1

CAPILLARY COVERED WITH ARMOUR

I1 AISI 304 SS **I2** AISI 316 SS **I3** PVC

I2

CAPILLARY LENGTH(Max up to 6Mtrs.)

IN METERS (e.g.1.5= 1.5METERS 2.0=2METERS)

3Mtr.

OTHER ORTIONS

K3 HELIUM LEAK TEST **K4** DRY SEAL ONLY WITHOUT INSTRUMENT

K3

Ordering Example:

BBQ-YA-M3-N1-O1-Q1-D1-R1-S1-T1-V1-G1-H1-I2 -3Mtr.- K3

Note: · Due to continuous improvement, the specification may vary from time to time.